



Lighthouse for the Blind  
*of the Palm Beaches*  
*Celebrating 70 Years*

**2016**  
**Annual Report**



Lighthouse for the Blind  
*of the Palm Beaches*

## Mission Statement

**Lighthouse for the Blind of the Palm Beaches assists persons with visual impairments to develop their capabilities to the fullest and to utilize them in the pursuits of life which are the right and privilege of all.**

Dear Friend,

We are delighted to be celebrating the 70th Anniversary of Lighthouse for the Blind of the Palm Beaches with you!

Founded in January 1946 by the West Palm Beach Lions Club, the organization began as Lions Industries for the Blind with a 100 - by 200 foot lot with a \$10,000 construction budget. Through hard work and dedication, the volunteers opened a kindergarten in 1952 and a summer program for pre-teens in 1968. To maintain pace with the blind and visually impaired population within the community, an adjustment program for seniors was introduced in 1971. In 1975, Lions Industries for the Blind moved into an 8,000 square foot building allowing for expanded services and programs to meet the needs for all ages. The organization's name was changed in 1978 to Lighthouse for the Blind of the Palm Beaches.

Although there were some challenges throughout the years, the accomplishments and successes have been significant for the thousands of people who have benefitted from the programs and services, which ultimately expanded from Palm Beach County, into Martin, St. Lucie, Indian River and Okeechobee counties.

On behalf of the thousands who are blind or visually impaired and receive services from Lighthouse for the Blind of the Palm Beaches, thank you for being a friend and supporter of the Lighthouse. And thank you for helping celebrate our 70th anniversary with your continued support.



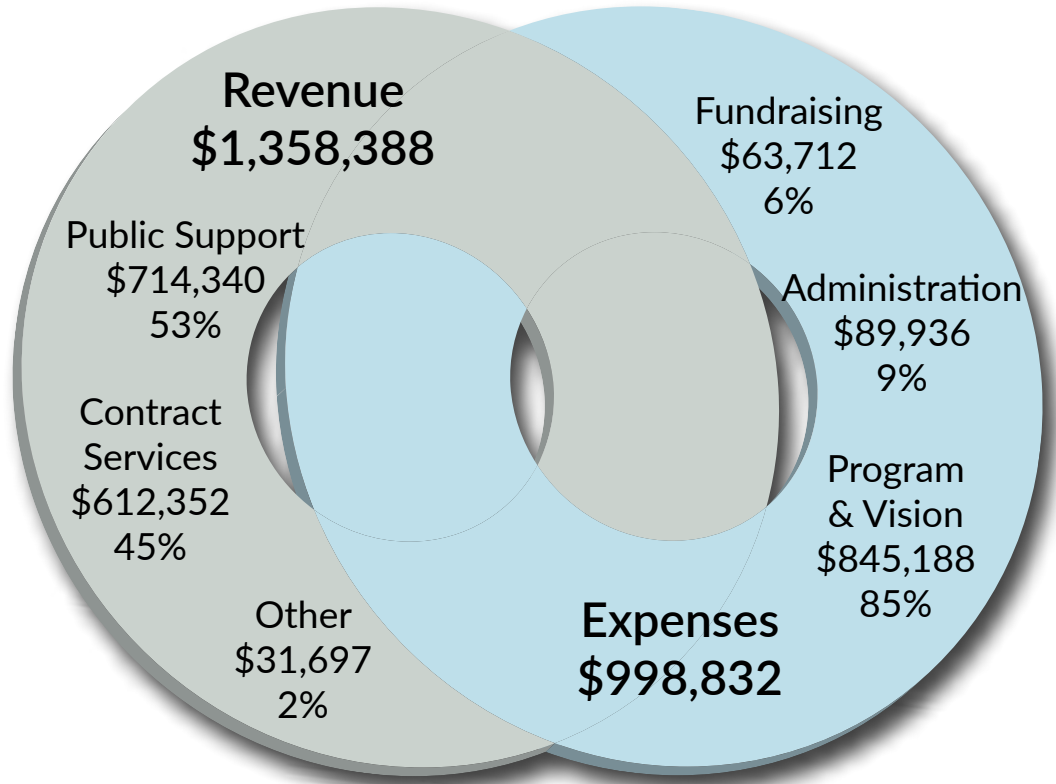
Marvin A. Tanck  
President & CEO



Donte' Mickens  
Chairman of the Board

# 2016 Financials

Audited



## Become a part of the Lighthouse Legacy Society

The Lighthouse Legacy Society recognizes those who have chosen to remember the Lighthouse in their wills so that our services may be perpetuated far into the future for anyone who will someday need our help coping with vision loss.

To learn more, please visit [lighthousepalmbeaches.org](http://lighthousepalmbeaches.org).

We thank you!

Your continued support is very much appreciated and makes our work possible.

Together, we can continue to light the way for persons with visual impairments.

You can extend your support by

- Attending or sponsoring events
- Giving online through a financial contribution
- Making a planned gift
- Becoming an organization sponsor

We are grateful for the support of our donors, sponsors and partners. Your generosity allows us to continue our legacy of making a difference to those in our community who are blind or visually impaired. Please visit [lighthousepalmbeaches.org](http://lighthousepalmbeaches.org) for listings of those who have helped us light the way in 2016.

A COPY OF THE OFFICIAL REGISTRATION AND FINANCIAL INFORMATION FOR THE LIGHTHOUSE FOR THE BLIND OF THE PALM BEACHES, INC., A FLORIDA BASED NONPROFIT (REGISTRATION NO. CH77), MAY BE OBTAINED FROM THE DIVISION OF CONSUMER SERVICES BY CALLING TOLL FREE 1-800-HELP-FLA (435-7352) WITHIN THE STATE OR VISITING AT [www.freshfromflorida.com or https://csapp.800helpfla.com/cspublicapp/giftgiversquery/giftgiversquery.aspx.] REGISTRATION DOES NOT IMPLY ENDORSEMENT, APPROVAL, OR RECOMMENDATION BY THE STATE. THE LIGHTHOUSE FOR THE BLIND OF THE PALM BEACHES, INC. RECEIVES 100% OF EACH CONTRIBUTION.

## Blind Babies Program

From birth until about five years of age, vital connections are formed between a child's eyes and brain. Early intervention services are essential to compensate for the vision loss. Lighthouse for the Blind of the Palm Beaches expanded its children's programs and services in 2016 with the addition of our Blind Babies Program. This program helps parents and their babies born with severe visual impairments or blindness by providing critical early intervention services.



Lighthouse client Sawyer and his mother, Alexandria

## Orientation and Mobility

"Take a step into independence with the Lighthouse for the Blind ..."



Paul Jones, Lighthouse client

# 1,312 people received the following support from Lighthouse for the Blind of the Palm Beaches in 2016

- Assistive technology: Smart phone and computer instruction
- Independent living skills training: Personal and home management
- Orientation and mobility instruction: Travel training and cane skills
- Adjustment-to-blindness counseling: Individual counseling and support groups
- Transition Program: Community integration, college preparation and career exploration for children, ages 14 through graduation
- Summer camp and year-round programming for children, ages six to 13
- Vision screenings at area pre-schools and daycares
- Early intervention services for babies, birth to age five
- Low-vision clinic and services: Prescription of magnifiers and optical devices
- Social services/information and referral
- Community education and training
- Socialization opportunities
- Aids and Appliance Store
- Employment search strategies
- Equipment Grant Program

Lighthouse for the Blind of the Palm Beaches  
1710 E Tiffany Drive  
West Palm Beach, FL 33407-3224  
561.586.5600  
888.399.1129  
[lighthousepalmbeaches.org](http://lighthousepalmbeaches.org)



Lighthouse for the Blind  
*of the Palm Beaches*  
*Celebrating 70 Years*

In partnership with



Equal Opportunity Employer M/F/V/D