

Palm Beach Shores Is Scene Of Multi-Million Dollar

World Famed Builder Develops

PALM BEACH SHORES: A. O. Edwards, well known in England, India and South Africa as a builder and engineer, now a United States citizen and Palm Beach winter resident, has added to his many achievements the development of the 240-acre peninsula north of Lake Worth Inlet, into an ideal resort community. With an independence that is refreshing in Florida real estate, Mr. Edwards undertook, alone, the multi-million dollar improvement of this community and the building of the new and beautiful Inlet Court Hotel



A. O. Edwards, president and developer of Palm Beach Shores.

More than ten miles of streets have been graded and paved. A complete water system, costing nearly \$400,000, with well fields capable of supplying in excess of a million gallons per day, has been installed for the Palm Beach Shores property.

The 3700' shoreline on Lake Worth has been bulk-headed with pre-cast reinforced concrete for 3000 feet. Seventy-two dock spaces were built and are available. There are tennis courts and two swimming pools—a championship pool for adults and another for children. Electricity and telephone service have been brought in and made available to the entire development.

Mr. Edwards exhibited the same

planning skill with his Palm Beach Shores development that made his Grosvenor House Hotel in London, England, the most talked about hostelry and grounds in the world. The Grosvenor House, planned and built by Mr. Edwards in 1927 and owned by him until 1935, is an achievement that would have satisfied most for a lifetime.

But to A. O. Edwards, the choice resort location of this development for these many years was a challenge and an opportunity.

He states, "Florida's climate advantages surpass anything I've experienced anywhere, and with the ever increasing number of people visiting here each winter, many of whom plan to retire and live here year round, I can see nothing but growth for the southeast coast. This Palm Beach Shores peninsula needed nothing more than a sizable investment in improvements to make of it one

of the most attractive resort communities in the state."

"I have made that investment," continued Mr. Edwards, "because I believe, property which offers the living and recreational ad-



THE INLET COURT HOTEL created by A. O. Edwards, is shown here. Designed on the wing and cloister plan, it is one of the finest fine services and perfect resort

Many Unique Advantages Offered

Palm Beach Shores Gives Residents Exclusive Recreational Features

Planning and development of Palm Beach Shores is keyed to outdoor recreation and relaxation. It is one of the finest residential areas in Florida for those who love the sea and water sports.

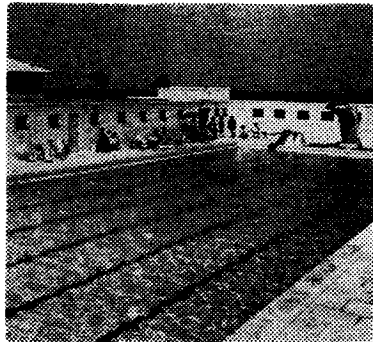
Palm Beach Shores makes the most of its natural setting with blue water on three sides. A choice ocean beach, called by many the best in Florida, is on the property boundary on the east. A large strip of this beach has been dedicated in perpetuity to the lot owners.

On the south is the Lake Worth ocean inlet, providing quick access to famed big-game, deep-sea fishing grounds just off shore. The Gulfstream is but five minutes away by boat.

On the western shore of the development is 3700 feet of beautiful Lake Worth frontage. Three thousand feet of this frontage has

Olympic size for adults, the other for children. Palm Beach Shores residents have the privilege of using these pools and lockers for a small annual membership fee.

Palm Beach Shores has a distinctly delightful climate for year round outdoor living, due to its unique island-like location. It is



Palm Beach Shores boasts of two swim pools on the grounds of the Inlet Court Hotel. A swimming club gives residents the use of these pools, the one for children, the other a championship pool of Olympic size for adults.

PALM BEACH SHORES
Florida's

Palm Beach Shores is an A. O. Edwards, debt-free, fully improved development.

Certificate of Appreciation
This is to certify that the sum of \$100.00 was received from Mr. and Mrs. J. H. Smith for the purchase of a lot in Palm Beach Shores, Florida.

A. O. Edwards

Improvement!

ops New Resort Community

Advantages of this peninsula location has appeal for any number of people who can and will buy. To be doubly sure of the latter, we have purposely kept our prices down at Palm Beach Shores so

that people of modest means can build here, enjoy ocean-front living comforts at reasonable cost."

Undoubtedly this wise planner and developer of Palm Beach Shores was right.

Today, just two years from the start of development, Palm Beach Shores is an attractive and active community. Many of the homesites have been sold and homes have been built.

There is a busy air about Palm Beach Shores all year round. But now, in this winter season, with the Inlet Court Hotel, as well as the other resort apartments built here in the last year, enjoying a capacity guest list, traffic over the new bridge and through the development is at peak.

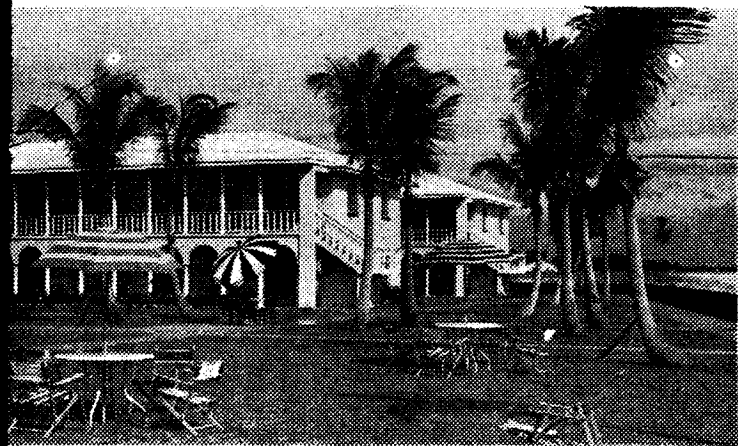
Construction goes forward on several new homes being built by the developer for resale, and on others being built by individuals. Palm Beach Shores is a miracle of planning and improvement.

Today a new Memorial Bridge, completed just last fall at a cost of nearly \$1,000,000, and the planted parkway and fountain entrance to this paradise by the sea, open new vistas of living comfort. Best of all, it makes available to

the business man, the retired couple from the north on moderate income, or those seeking winter and year round homes, a resort community that is unsurpassed for recreation and the best in Florida living.

Palm Beach Shores has been fully approved for F. H. A. financing of homes and apartments, and many are planning or building now, their new homes or apartments. The community is complete and appealing in every respect. Modern zoning sets residential areas apart from the hotels and apartment. A business section is available for stores and service establishments. All streets are planned for a smooth traffic flow with no congestion and parking areas are ample.

Palm Beach Shores opens up for private builders, homeseekers and resort property operators an unusual opportunity to enjoy and capitalize on one of the most advantageous marine locations in Florida.



directly on the ocean at Palm Beach Shores, built, owned and operated here from a view across the broad lawn facing the ocean beach. In principle, it gives to each apartment and room, broad view of the sea as already gained a wide popularity among visitors attracted by its location.



BEACH SHORES

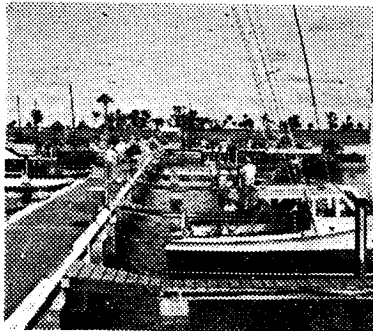
NEW Resort Community

The Most Important Land Purchase Opportunity In Southeast Florida!

Palm Beach Shores is turning back the pages of southeast Florida history, opening to you an opportunity for real property investment that has not been available since the pioneering days of the great resort centers of Palm Beach and Miami Beach. The one big difference today is that trends are established. Peninsular location with blue water on three sides such as is



Fast clay courts have been installed at Palm Beach Shores and important tennis matches are scheduled for play here in this winter season.



Dockage for 72 yachts has been installed on Lake Worth and resident boat owners may tie up here within walking distance of home.

a concrete bulkhead. Boat docks have been installed to accommodate any craft that can navigate the Intercoastal Waterway.

Tennis courts have been built and a nine block long park is laid out in the center of the residential area.

At the Inlet Court Hotel are two pools, one of championship

tempered in winter by the nearness of the Gulfstream on the east, and by Lake Worth on the West. Frost here is practically unknown.

In summer, cooling Trade Winds sweep Palm Beach Shores with unhindered regularity, making its future bright as a summer, as well as winter resort area for home owners, and for apartment or hotel investors.

Moderate Cost Resort Homes Now Building

Spaciousness and Florida living comforts are featured in a group of moderate priced homes now being built for sale at Palm Beach Shores. They are designed to provide homeseekers with the delights of an ocean beach setting, marine views, and a desirable resort environment at an economical cost.

They are 2 bedroom homes with more than 1,100 feet of floor space, tiled baths, terrazzo floors and tiled roofs. Each will be beautifully landscaped by the builder. All are F. H. A. approved, and available on easy terms.

The Intracoastal Waterway, just to the west of Palm Beach Shores in Lake Worth, is the yachting highway of America.



When Visiting Palm Beach Shores Dine at the Ocean Loggia at the **INLET COURT HOTEL**

The Inlet Court Hotel invites you to enjoy its hospitality on your visit to Palm Beach Shores. Delicious meals for sturdy appetites are served in the ocean loggia dining room overlooking the lawn and beach. A cocktail lounge and snack bar are also open for your convenience.

Accommodations for a stay at the Inlet Court Hotel include efficiencies and bedroom apartments and air conditioned hotel rooms. Guests have swimming pool privileges and, of course, sun and surf bathing on the excellent ocean beach.

For reservations and rate list address:
The Manager, Inlet Court Hotel, P. O. Box 390,
Palm Beach, Florida Phone Palm Beach 3-5743

See our spacious moderate priced homes on large, beautifully landscaped lots, available on convenient terms.

PALM BEACH

available at Palm Beach Shores, is a definite value on the market. And here in a perfect sun-and-sea setting with a superb ocean beach, unmatched on the southeast coast, you can obtain homesites, apartment and hotel sites at prices which are without comparison for their value.

NOW **FOR A LIMITED TIME ONLY!**

3000 Feet Of Florida's Finest Ocean Frontage
3700 Feet On Beautiful Lake Worth
2000 Feet On Lake Worth Inlet

At Lowest Prices On Southeast Coast

To investors in resort hotel and apartment property, or to you who want a water front homesite . . . see the ocean beach, the lake and inlet frontage at Palm Beach Shores. There are 8,700 feet of it in all. The beach frontage runs 400 feet in depth to a wide boulevard on the west. Lake Worth frontage is bulkheaded with "lifetime" concrete seawall. The developers want the earliest possible private development of this property. That is why it is offered, now, at the lowest per-front-foot cost of any comparable ocean property on the lower east coast.

SUPREME LOCATION FOR SUN and SEA LIVING

Palm Beach Shores offers an exclusive, island-like setting away from crowds and noise with every convenience for joyful living. A beautiful ocean beach. Tennis courts. Two swim pools, one for adults, one for children. Great boating and fishing.

Over a million dollars worth of improvements are installed and paid for . . . paved streets, telephone service, electricity, Florida's finest water system. Climate, marine setting, pleasure, comfort—all the things you want for perfect Florida living—are yours with the purchase of a homesite at Palm Beach Shores.

Apartment Sites, 75' X 115' From \$2530.00

Homesites, 75' X 115' From \$2200.00

FREE WARRANTY DEEDS AND INSURED TITLES
F. H. A. APPROVED

Full Cooperation to Brokers

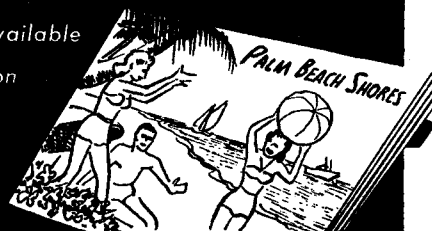
SHORES

SEE THIS NEW RESORT TODAY

Take U. S. Highway 1 to Riviera Beach and turn east on state road 703 across new Riviera Bridge to Palm Beach Shores. Public buses from W. Palm Beach direct to property. STOP AT DEVELOPMENT OFFICE FOR PROPERTY MAP.

Brochure Available

Mail Coupon



Palm Beach Shores
P. O. Box 390
Palm Beach, Florida

Gentlemen:

Without obligation, please mail me a free copy of your Palm Beach Shores brochure.

Name

Address

City Zone State

