



philanthropic NEWS

SUMMER 2011

Promoting philanthropy Investing in communities



Affordable rental housing developed by Adopt-A-Family of the Palm Beaches



Gleaning for the Food Recovery Program



Preparations for food distribution at Village Baptist Church

visioning philanthropy

Be a Part of the Million Dollar 1:1 Matching Opportunity!

Who would have predicted in the late 1980s that the worst recession since the Great Depression would take place in 2008 with devastating housing and food consequences in Palm Beach and Martin Counties? Who would have foreseen that over 1,700 children in the Palm Beach County School District would be homeless and over 50% of children would be receiving free or reduced price lunches? Or that there would be over 200,000 local families who would be paying in excess of 30% of their income for housing, which would force them to choose at the end of the month whether to pay rent or feed their family?

did you know...

that there is a 74% increase

in Palm Beach County, and a 99% increase in Martin County in the use of food stamps since 2007? Nationally the food stamp program – now called SNAP – currently feeds 1 in 8 Americans and nearly 1 in 4 children. (Source: *New York Times*)

Providentially, beginning nearly 40 years ago, dozens of local philanthropists established Community Impact Funds, entrusting the Community Foundation's staff and Board to respond to community needs. These unrestricted funds were established to support the critical needs of the community, including future needs that could not be anticipated at the time the gifts were made.

We recently approved a total of \$489,000 in grants for the *Alleviate Hunger and Affordable Housing Initiatives* to facilitate partnerships between the agencies in our food and housing systems, with the ultimate goal of improving access to food and affordable housing in our communities.

Nearly four decades later, grants made from the initial gifts to establish funds, are helping to increase the capacity of hundreds of local food pantries and feeding programs, boost the number of children receiving dinner meals after school, and assist at least 2,500 people in the online application process for food benefits. The funds will help a minimum of 450 families to maintain stabilized housing, rehabilitate 100 abandoned homes, and build nearly 50 new, affordable homes.

To leverage the Foundation's \$500,000 in grants and double the amount of grant investment to \$1 million, the Foundation has issued a one-to-one matching challenge. Organizations who received the grants will have until October 2011 to meet their match opportunity. The participating agencies in the matching challenge are:

- Adopt-A-Family of the Palm Beaches, Inc. • C.R.O.S. Ministries • Center for Family Services of Palm Beach County • CredAbility • Families First of Palm Beach County • Florida Impact • Glades Initiative, Inc. • Habitat for Humanity of Martin County, Inc. • Habitat for Humanity of South Palm Beach County • Habitat for Humanity, Palm Beach County • Housing Partnership, Inc. • Indiantown Non-Profit Housing, Inc. • Neighborhood Renaissance • The Lord's Place, Inc. • The Village Baptist Church/Feed the Hungry • Treasure Coast Food Bank • Urban League of Palm Beach County, Inc.

You can contribute directly to these agencies to help meet their goal, or as a donor advised fundholder of the Community Foundation, you may recommend a matching grant distribution directly from your fund. If you are interested in establishing a donor advised fund, please contact Danielle Cameron, VP for Personal and Family Philanthropy, at 561-659-6800 or dcameron@cfpbmc.org.

NEW: 3rd Annual Nonprofit and the Economy Survey!

WITH DIMINISHING SOURCES OF FUNDING, NONPROFITS CONTINUE TO FACE UNPRECEDENTED CHALLENGES

As a Center of Philanthropy in our region, our goal is to strengthen nonprofits and support their efforts to meet the challenges of the current economic times.

For the third time, the Community Foundation has partnered this summer with Allegany Franciscan Ministries, and for the first time with Quantum Foundation, to conduct a qualitative survey of the nonprofit community and the effect the recession has on the nonprofit sector in our service areas.

According to the study, an impressive number (2,946,438) of volunteer service hours were given this year to the community. The estimated dollar value of volunteer time is \$62,935,915, showcasing the enormous value the volunteers provide. However, diminishing sources of funding, both public and private, continue to challenge the sector. Findings show that social service agencies often struggle between serving clients and maintaining organizational capacity.

Funding for operating expenses increased by 66% of respondents. This issue emerged as a top priority in light of the rise in demand for services reported by more than three quarters of the nonprofit respondents.

Many nonprofit organizations have continued to cut expenses and increase fundraising activities, and a large number (63.7%) reported that they are collaborating with other nonprofits.



postcards from palm beach



The Preservation Foundation of Palm Beach recently received a grant in the amount of \$7,500 from The Walden Fund of the Community Foundation to help restore one of the much-loved structures of Palm Beach and a significant part of the town's history – the Addison Mizner Memorial Fountain.

The Walden Fund's grant will facilitate the removal and remodeling of heavily-damaged

sections of the over 80 year-old fountain, which sits in the center of Palm Beach's Town Hall Square district, just north of Town Hall.

Established for preservation and conservation of the historical heritage for the Town of Palm Beach, The Walden Fund was created in 1982 with a \$5,000 gift by an anonymous donor. It has now awarded \$38,650, almost 8 times the original gift for projects to preserve its historical assets!

did you know...

our founding donor was from Palm Beach?

Influenced by the community foundation movement in the 1960s and 1970s, Winsome and Michael McIntosh – former residents of Palm Beach – wanted to inspire local philanthropy and improve the community by establishing a community foundation. In 1972, they donated their first gift and helped launch your Community Foundation.

word from the president



Leslie Lilly

It's an oft repeated statement that the Greater Palm Beaches and Treasure Coast are a tropical paradise. It hasn't taken much convincing to attract the million-plus residents who have made their home here or the visitors from all over the world who make our region a vacation destination. A remarkable, yet sometimes hidden feature of this tropical landscape is the abundance of philanthropic purpose present. It is that philanthropic purpose that inspired us to title our seasonal newsletter *The PhilanTropic News*.

Whether a fulltime resident or a snowbird with sand in your shoes, the Community Foundation is your center of philanthropy. Its role in charitable giving is central to fulfilling the aspirations of donors whose dream of paradise begin right here. So I invite you to pull up a beach chair, enjoy the shade of your umbrella, add a little more ice to your Arnold Palmer, and dive into the newest edition of *The PhilanTropic News*. Learn what's happening at the Community Foundation at your leisure.

For those of you who are otherwise in faraway places, consider *The PhilanTropic News* your connection to home that brings with it a whiff of the ocean and news of how the Community Foundation's efforts are making a difference. We hope that you have a great summer and we will see you soon!

Where We've Been Lately:



Marshall Memorial Fellowship Visit

Our staff participates in events and meetings throughout Palm Beach and Martin Counties. We also periodically join with our philanthropic colleagues from around the state to partner and leverage our resources with other grantmakers. This is some of the "beyond grantmaking" work that educates our staff and supports the Foundation's leadership role in our communities.

Fort Pierce: Treasure Coast Public Safety Complex: Hunger-Free Community Coalition hosted by the Treasure Coast Food Bank.

Palm Beach Gardens: North County Emergency Operations Center: Staff helped arrange a Funders Tour of the Center as we reviewed our community disaster grantmaking strategies.

Riviera Beach City Hall: Guest presenter: Association of Fundraising Professionals (AFP) Diversity Outreach Program on nonprofit collaborations.

Jacksonville: Jacksonville Community Foundation: Presentation and discussion with northeast Florida grantmaker staff, trustees and donors. The topic: Philanthropic Leadership in Challenging Times.

West Palm Beach: A Foundation-hosted lunch and program for an international group of German Marshall Fellows. The topic: Community Foundations: Unique in American Philanthropy.

Belle Glade: Luncheon and program hosted by the Sugar Cane Growers Co-op in honor of the recipients of the scholarship awards made possible by the R. Bruce Jones Memorial Scholarship Fund.

Boca Raton: To participate in the planning and launch of a new fund of the Community Foundation that provides women in our community an opportunity to pool their charitable resources in order to increase the impact of their giving.

Palm Beach Gardens: To participate in the board of trustees meeting of the Bob and Mary Pew Public Education Foundation, a supporting organization of the Community Foundation.



Deborah Pucillo with her family

getting to know us:

Meet Your Community Foundation Neighbor: Deborah Dale Pucillo

It would be impossible for the Community Foundation to achieve its charitable goals without the many dedicated volunteers who contribute thousands of hours on behalf of the foundation's vision and mission. This edition of the newsletter allows us to introduce to you one of our outstanding volunteers, Deborah Dale Pucillo, a former Palm Beach County Court Judge and Chair of the Community Foundation's Board of Directors.

Debbie first learned about the Community Foundation in the mid 1990s when she served on the Board of the Health and Human Services Planning Association of Palm Beach County, Inc. with Shannon Sadler, the former President and CEO of the Community Foundation. As a judge, Debbie was well-informed about health and human services organizations in Palm Beach County as well as the competition and challenges in the nonprofit world, and the more she learned about the Foundation, the more she was drawn to it. As she looks back, Debbie was attracted by the fact that the Community Foundation creates a permanent endowment to benefit the community, now and in the future. She was also impressed by the Foundation's take on problem solving, and its collaborative approach to spending its resources. Finally, she appreciated the professionalism, integrity and character demonstrated by both staff and board members.

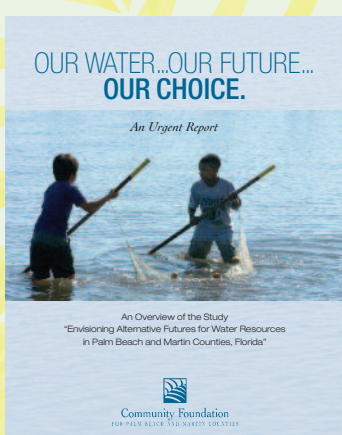
After she retired from the bench in 1999, she was nominated and elected to serve on the Foundation's board of directors. She brought a studied, conscientious attitude, tremendous experience and a deep interest in issues affecting our area's quality of life, including a contagious enthusiasm for the communities of Palm Beach and Martin Counties.

Considering her long relationship with and love for our community, like many now permanent residents, Debbie became a Floridian by choice. She was raised in Rhode Island, but has lived in Palm Beach County since 1978. She met her husband of 34 years, local attorney Michael Pucillo, in Washington, D.C. during a summer internship while a student at Mount Holyoke College. Michael Pucillo's family owned the well-known Petite Marmite Restaurant, which was located in his hometown of Palm Beach where Michael currently serves as a City Councilman.

The Pucillos have three grown children: Sarah, age 31, William, age 27 and Laura, age 21. Sarah currently lives in Brooklyn, NY and is a stay-at-home mom and writer. William works for a private equity firm in Boulder, CO and youngest daughter, Laura, is a college student working this summer as a licensed EMT in New York State.

Debbie's tireless energy is a driving force in the board's leadership of the Foundation. In addition to her volunteer service on behalf of the Foundation, she still finds time to enjoy gardening, golf, yoga, walking, biking, hiking, skiing, reading, and attending theatrical performances. Debbie also volunteers as a mentor and supports numerous charitable causes including C.R.O.S. Ministries, the Lord's Place, the Stowe Land Trust, Stowe Performing Arts, and the Rosarian Academy. Despite her many interests and avocations, Debbie still finds time on a regular basis to devote to her 14-month-old grandson, Jameson. When it comes to family, the Community Foundation understands the importance of that priority!

heard on the street



NOT A DROP TO DRINK Two years ago, the Community Foundation took a closer look at the water issues confronting South Florida's long term future and published an urgent report. The report appealed to area residents to more seriously envision an alternative future for managing and sustaining our region's water resources.

The report noted, "In 2000, and then again in 2006-2008, insufficient rain fell to replenish the increasing demand of water being used by people and ecosystems. Water managers have tried to manage droughts by increasing supplies and by implementing measures to limit water use and decrease demands. But does our current drought suggest the region has passed a tipping point in which the wells literally run dry and insufficient water is available to meet rising demands?"

Since the publication of the study, we are again reminded by present circumstance, how very few strategies exist to cope with changes in rainfall, most especially the absence of rainfall.

William Matthews, then-chairman of the Foundation's Board, urged the public, in the preface to the report, to become more involved in these critical issues. He noted "The Community Foundation does not claim to have all the answers, yet we do have a sense of urgency... We must act now as though our lives and those of future generations depend on it." His message is as relevant now as it was then. To obtain the report, please visit our website: www.yourcommunityfoundation.org/Environmental-Endowment.

Your Gift to the Leadership Fund Impacts Hunger

Each year, the Community Foundation recognizes the significance of philanthropy in improving the lives of the people of Palm Beach and Martin counties at our Celebration of Philanthropy Dinner Dance. This year, we addressed issues of food insecurity in our community by launching the *Alleviate Hunger Initiative*. This new initiative was developed through the Foundation's Leadership Fund, and is building partnerships with agencies in our food system, with the ultimate goal of improving the access to and distribution of food in our communities.

If you supported the event, your contribution helped our staff identify opportunities which will:

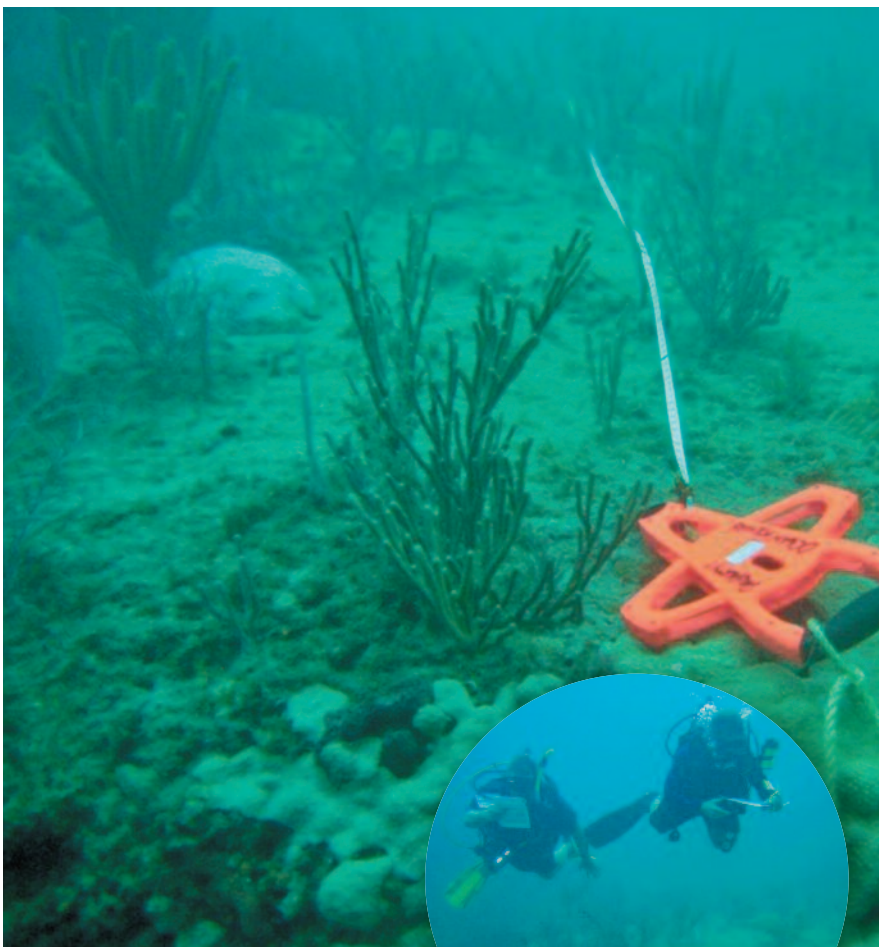
- Enable hundreds of local food pantries and feeding programs to serve more people more food
- Assist at least 2,500 people in the online application process for benefits
- Increase the number of children receiving hot, balanced meals after school – rather than just a snack
- Bring together community members to increase awareness of local feeding programs and stimulate action



Mrs. Debbie Pucillo, Mrs. Elizabeth Atterbury and Mrs. Joanie Van der Griff – Mrs. Pucillo and Mrs. Paul Van der Griff together served as chairs of the Celebration of Philanthropy Dinner Dance.

did you know...

by 2018, 59% of all Florida jobs will require some form of postsecondary education? Today, only 37% of working adults in Florida have a postsecondary degree or credential.
(Source: Florida College Access Network)



Citizen-divers mapping the ocean reefs

donor doings

Ocean Reefs Inspire Donor Investment

Along the coast of South Florida, local residents know the critical role that coral reefs play in marine life and our ocean ecosystem. But while many of us share a concern for the health of the reefs, more action is needed. Royall Victor III, Chair of the Community Foundation's Environmental Advisory Committee and the Vice Chair of the Community Foundation's Board of Directors was inspired to do more.

When Mr. Victor, a long time advocate of environmental conservation, first heard about the mission of the Ocean Rehab Initiative from the Foundation's Community Investment staff, he was impressed by their mission to offer reef check certification courses to 'citizen scientist' divers. The newly certified eco-divers, a group of otherwise ordinary, concerned citizens, will participate in the Florida Reef Project, establishing the first scientific baseline in South Florida to accurately measure reef health and its progression.

Mr. Victor took action and offered a matching grant to the project from The Wendy and Royall Victor III Fund for Environment and Landmark Preservation.

"Real progress in addressing environmental challenges is only possible with the involvement of a broad group of concerned citizens. By employing citizen divers, the Ocean Rehab Initiative is taking the first steps necessary to effectively protect our local reef structures, which are one of the most endangered marine environments extant," Mr. Victor stated.

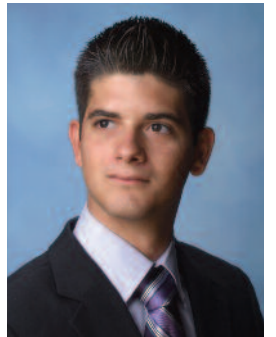
The initiative, supported through Mr. Victor's ongoing commitment to environmental causes in the community, is a major step towards maintaining a healthier ocean.

Record Number of Scholarships Awarded

According to the College Board's *Trends in College Pricing*, tuition and fees at four-year public colleges and universities rose in average by 5.6% per year, well beyond the rate of general inflation. Without some form of financial aid, many students simply can't afford to continue their post secondary education.

For close to 40 years, the Community Foundation for Palm Beach and Martin Counties has been dedicated to easing this burden on students and their families through its scholarship program. Thanks to the collaboration with private foundations and donors who care deeply about education in our area, this year the Community Foundation set a new record: \$730,000 in scholarships was offered to 106 deserving local students, which tops the amount offered to last year's high school students by \$171,400.

One of the students, Lucas Metropulos, is the winner of the Helen Powers Monahan Scholarship at the Foundation. A senior at Saint Andrews School in Boca Raton, Lucas started Fishing for Families in Need, a nonprofit entity that hosts after-school fishing sessions for underprivileged children. This scholarship will help Lucas, who was nominated by *Boca Life Magazine* as one of the South Palm Beach County Rising Stars and a winner of the *Palm Beach Post* Pathfinder's Award for Community Involvement, continue his education at Duke University.



Lucas Metropulos

This year, as every year at the Foundation, students were evaluated based on a written application, test scores, grade transcripts, letters of recommendation and interviews. The selection committees consist of remarkable volunteers who give hundreds and hundreds of hours to this process. They were joined in their commitment by donors who, despite the financial times, sustained contributions to underwrite and increase the number and dollar amount of scholarship awards available this year.

"Few doubt the importance of education in shaping the opportunities of a lifetime. We know firsthand that scholarships open doors which otherwise may remain closed for talented students were it not for the care and vision of donors who appreciate the power of this gift," said Leslie Lilly, President and CEO of the Community Foundation.

All scholarships were started with donations made by individuals through the Community Foundation for Palm Beach and Martin Counties, often to honor a loved one.

new funds serve community

Two new charitable funds were recently established at the Community Foundation for Palm Beach and Martin Counties, bringing the total number of funds at the Community Foundation to over 275 individual funds. Together, these funds distributed \$5.3 million dollars in charitable grants this past fiscal year, in support of diverse charitable interests and organizations, including awarding scholarships, promoting affordable housing, alleviating hunger and beyond. We welcome these new donors to the Community Foundation's Family of Funds. They include:

MARION ROSSITER-SMITH FUND Mrs. Rossiter-Smith, a former resident of Lake Worth, FL established a fund to help endow her charitable organization of choice in perpetuity, the First Congregational Church of Lake Worth. This gift will provide a lasting legacy to help sustain one of her favorite nonprofit organizations. Established as a permanent fund, the Community Foundation serves as charitable steward of the fund, ensuring the donor's intent and that the charitable purposes of the fund are met for good, forever.

THE PARMET FUND Interested in supporting diverse community needs with their charitable contributions, the Parmets, residents of Jupiter, turned to the professional expertise of the Community Foundation to help successfully manage a complex gift. Their newly-established donor advised fund at the Foundation minimizes administration requirements, and provides maximum flexibility for the advisors to the Fund to play an active role in choosing and recommending grants to organizations and programs of special interest to the family.

Meet The Foundation's Newest Board Members!

Please welcome our three new members of the Board of Directors: Kathleen B. Emmett, Steven A. Templeton, and Andrew Kushner. Adding substantial senior management experience to the Foundation's already solid Board leadership team, the appointments support the Community Foundation as it continues its growth and carries out its mission to enhance the quality of life for all Palm Beach and Martin County residents, now and for future generations.



Kathleen B. Emmett

KATHLEEN B. EMMETT,

CFRE, of West Palm Beach, FL, is the Great Expectations Campaign Director for Palm Beach Day Academy, the oldest independent school in Florida for students in pre-primary through grade nine. As a Certified Fund Raising Executive (CFRE), she brings over 15 years of experience in non-profit management. Kathleen has served as chief development officer for local organizations such as Hospice of Palm Beach County, The Lord's Place, Rosarian Academy, and the Norton Museum of Art.



Steven A. Templeton

STEVEN A. TEMPLETON,

of West Palm Beach, FL, is the Founder of Templeton & Company, an accounting firm with offices in West Palm Beach and Fort Lauderdale, that provides audit, assurance and tax services, as well as technology consulting, strategic business planning, and other highly specialized services. Steve is a member of the Florida Institute of Certified Public Accountants, Association of Management Consulting Firms and Founding Member and Chairman of the Advisory Board for the Rinker School of Business at Palm Beach Atlantic University.



Andrew Kushner

ANDREW KUSHNER,

of Lake Worth, FL, is the Assistant Treasurer at NextEra Energy, Inc., North America's top producer of energy from the wind and the sun. Andrew brings 18 years of in-depth knowledge of financial products and markets, financial analysis, valuation, and accounting experience to the Board. He is a member of the American Institute of Certified Public Accountants and the Florida Institute of Certified Public Accountants.

advisors in action

Giving While Living

The Community Foundation works closely with a regional network of accomplished professionals in the fields of estate planning, accounting, and financial service. We support advisor efforts to educate clients on the benefits of philanthropy and highlight the role of the Community Foundation in advancing charitable purposes associated with and appropriate to their clients' charitable goals.

For example, James Edward Weber, an estate planning attorney from West Palm Beach, recently approached the Community Foundation about his client who wanted to demonstrate his commitment to the community by making a bequest to the Foundation.

Mr. Weber provided his client with the information he needed to plan a bequest. However, after reviewing all the options available to him to accomplish his charitable goal, his client chose instead to establish a fund while still living in order to witness the impact of his charitable giving to the community. By creating a designated fund now, his gift will be able to address a variety of immediate needs in the community now, and in the future.

His designated fund will directly support three nonprofit organizations of his choice. To maximize the impact on the community, Mr. Weber's client also decided that a portion of the yearly allocation from his fund be included in the Community Foundation grantmaking in the areas of education and the environment.

Giving while you're living offers individuals the opportunity to personally guide giving toward particular charitable interests and to enjoy the satisfaction of experiencing the difference giving now can make. Your professional advisor can help explore all the options and the Community Foundation is here to help.



Tax-Smart Philanthropy

With our professional services, we can help you create vehicles for giving to advance your client's charitable interests.

calendar of events

LEADERSHIP EVENTS

Presenting the 2010 Bank of America High Net Worth Philanthropy Study

September 15th, 2011 at the Community Foundation,
700 S. Dixie Highway, West Palm Beach FL 33401



Community Foundation

FOR PALM BEACH AND MARTIN COUNTIES

Promoting philanthropy - Investing in communities

700 South Dixie Highway, Suite 200, West Palm Beach, FL 33401

561.659.6800 • FAX 561.832.6542

E-mail: info@cfpbmc.org • Website: www.yourcommunityfoundation.org

SUMMER 2011

Printed on recycled paper

Board of Directors

Deborah Dale Pucillo, *Chair*

Sally Gingras, Royall Victor III, *Vice Chairs*

Reuben B. Johnson III, *Treasurer*

Barbara Bishop Chapin, *Secretary*

Leslie Lilly, *President and CEO*

Ronald V. Alvarez

Pedro del Sol

George T. Elmore

Kathleen B. Emmett

Katherine P. Goldsmith

Paulette Koch

Andrew Kushner

William M. Matthews

Lawrence J. Miller

Lisa Newcomer Mulhall

John B. Murray, Jr

David G. Ober

James F. Orr III

Virginia H. Smith

Douglas A. Stockham

Steven A. Templeton

Roy J. Zuckerberg



Confirmed in Compliance with National Standards for U.S. Community Foundations

Nonprofit Organization
U.S. Postage
PAID
West Palm Beach, Florida
Permit No. 1871

Stay in touch with your Community Foundation!
Sign up for our e-news lists today at

www.yourcommunityfoundation.org