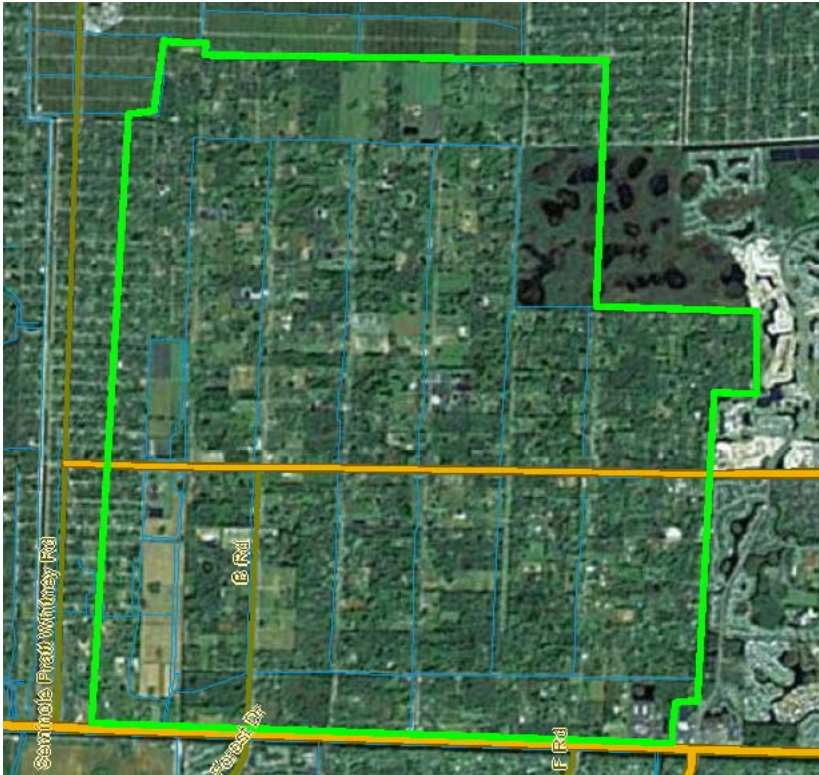


Loxahatchee Groves, Florida



It is Palm Beach County's newest municipality incorporated on November 1, 2006. Loxahatchee Groves joins as the 38th municipality in our county.

Loxahatchee Groves is bounded on the east by Royal Palm Beach, on the south by Wellington and on the west and north by The Acreage. It has an area of approximately 12.5 square miles (7,800 acres) and an estimated population of more than 3,000. When the 2010 Census is completed we will have a more detailed report available.

Loxahatchee Groves currently has approximately 3,122 people with 260 people per square mile. One can estimate a more conservative population change for Loxahatchee Groves, roughly 2.5%.

The median age of Loxahatchee Groves residents is approximately 35 years, with a median household income of approximately \$58,660.

Population Estimates and Projections

Population for the first year FY2005 is estimated to be 3,174 using the Census 2000 data and the assumption of a 2.5% growth rate over a three-year period. Table 1 presents the estimated population growth for the community over a 10-year period.

Table 1 Estimated Population Growth

Year	Population	Change in 3 year increments
2005	3,174	
2008	3,253	79
2011	3,335	82
2014	3,418	83