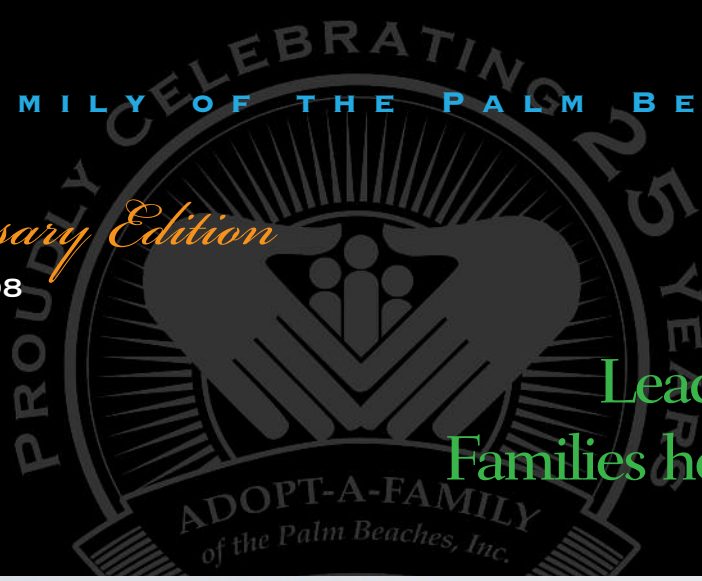


ADOPT-A-FAMILY OF THE PALM BEACHES, INC.

25th Anniversary Edition

ANNUAL REPORT 2008



Leaders in helping
Families help themselves





25

*Twenty-five years ago,
Adopt-A-Family helped
its first family.*

3,235

*In 2008, the agency assisted
3,235 families through
our core programs.*



Table of Contents

Who We Serve 3

Board of Directors 4

President & CEO Message 5

Terry Bozarth Tribute 6-7

Programs 8-9

Statement of Financial Position 10

Statement of Activities 11

Bridges Beacon Project 12

Community Partnerships 13

Martinis in the Marsh 14

Tree Lighting Celebration 15

Golf Tournament 16





In its first 25 years, Adopt-A-Family has helped

28,145

families reach self-sufficiency.



Who we serve

Adopt-A-Family serves residents in Palm Beach County who meet any of the following criteria:

- ☀ *Homeless children and their families*
- ☀ *Lower-income, working families in search of affordable housing opportunities*
- ☀ *Working poor who do not earn enough to support their families and are at risk of becoming homeless*
- ☀ *Families in a short-term situational crisis putting them at risk of homelessness*





“ Never doubt that a group
of thoughtful,
committed citizens can
change the world. ”

– MARGARET MEAD

2007-2008

BOARD OF DIRECTORS

OFFICERS

John P. Marasco – *President*

Garth E. Rosenkrance – *Executive Vice President*

Tequisha Y. Myles – *Secretary*

Deborah Rouse – *Treasurer*

DIRECTORS

Marilyn Brafman

W. Dale Brougher

John C. Castronuovo

John D. Deese

Kalintia R. Dillard

Heather B. Ferguson

Mari Frankel

Suzanne Frisbie

Nancy Golder

Beth Hennessy

Ruth Hennessy

Roger D. Jorn

Mary Lou Kromer

James E. Larschan

Kaela Lerner

John P. Lipari

Margaret P. Luntz

Jay R. Marcus

Paula Michel

Chris Oberlink

Kitty Silverstein

André Varona



President & CEO Message

*John P. Marasco,
President, Board of Directors*

*Wendy A. Tippett, MNM
Chief Executive Officer*



Adopt-A-Family was founded in 1983, by three local women who heard of a family temporarily down on their luck and too modest to ask for help. The family of four, who were living under the Royal Palm Bridge, was “adopted” by our founders, Lucy Runyon, Kay Mansollil, and Jayne Ellison, along with the first Adopt-A-Family board of directors. An affordable apartment and new job quickly put the family on the path to self-sufficiency. This initial success was contagious and fueled the founding members’ desire to help more people. They compiled a catalog of families in need and shopped it to local CEOs. By the end of the first year, more than 50 families who would have otherwise “fallen through the cracks” of existing support systems were adopted by organizations and individuals, and their lives were forever changed.

In the last quarter century, a surge in development, investment, and other resources flooded into Palm Beach County. The population grew, and with that the human service network expanded. Today, the economy is experiencing severe strains and service providers are stretched to the limit. As layoffs and foreclosures rise, the demand for services at Adopt-a-Family has doubled and we don’t expect that pace to

change in the near future. We are ready to face this challenge and with the backing of our loyal supporters, together we can make a positive impact on our community.

Adopt-A-Family has a history of creating new and innovative concepts to treat the causes of homelessness and poverty. In 1992, we received the first HUD supportive housing five-year demonstration grant in Palm Beach County and created Project SAFE (Stable, Able, Family, Environment) to serve homeless families. In 1997 we purchased 40 condos to provide housing and comprehensive support services to homeless families and in 2000 we purchased 24 additional housing units and created the first Service Enriched Housing model in Palm Beach County. In 2003, we moved into our Community Resource Center that housed administrative offices as well as Project GROW, our after-school program. In 2006, we organized the first Community Land Trust in Palm Beach County so that we could offer affordable housing to low-income families in perpetuity. Most recently, we helped create the Bridges Beacon Project, an ambitious collaborative among human service agencies, Children’s Services Council, United Way of Palm Beach County, Palm Beach United Way, the Palm Beach County School Board, and the Palm Beach County Health Department. This program coordinates child and adult education, healthcare, and social service delivery for the entire family without the barriers and impediments of traditional systems. We are happy to report that in December 2008 our newest housing endeavor, a nine-unit townhouse complex will be complete and provide permanent supportive housing for Palm Beach County Families.

For the next 25 years, we will maintain our tradition of addressing community needs as they arise, and continue fulfilling our mission of serving Palm Beach County families. We are indebted to you, our friends, supporters and funders, who have enabled us to fulfill our dreams – and those of the families we serve. You have made a commitment and have given from your hearts. You have donated your time, your money, and your energy, and you have done so with great passion. We thank you, and we look forward to working with you in the years to come.



TERRY BOZARTH

Visionary, Mentor, Friend

There are leaders and there are visionaries, but leadership and vision are rarely embodied in the same person. Former Executive Director, Terry Bozarth, is an exception. In 1989, when she took the helm, Adopt-A-Family was a small, struggling grass-roots nonprofit agency with only one social service program and a budget of \$80,000. But Terry had a vision of a proactive, effective agency designed to help families help themselves, and she was determined to see it through.

In 1990, Terry hired the first social worker for AAF, and a year later she secured funding from the United Way of Palm Beach County, giving the agency the legitimacy it sought within the nonprofit community. Terry's sensitivity to and perception of the unmet needs in the community was uncanny. In 1992, she saw the number of homeless families increasing at an accelerating rate, and she responded by applying for federal funding to create transitional housing with support services for homeless families. AAF was the first in the county to be awarded a five-year supportive housing demonstration grant by the U.S. Department of Housing and Urban Development (HUD).



Terry's plans for the agency expanded in 1995 when she was asked to take over Project UpLift from another nonprofit agency. This program, designed to assist families who had been self-sustaining but found themselves in temporary situational crises, was a good, strategic fit with the agency's mission. Terry's determination to change the lives of families in Palm Beach County continued to grow. In 1996, she successfully acquired funding through a second HUD grant, and the agency purchased a 40-unit apartment complex for homeless families and their children. In 2000, Terry orchestrated the purchase of a 24-unit apartment complex to serve working poor families in pursuit of home ownership, which became the Service Enriched Housing program.

A crowning achievement prior to her retirement in 2003 was the construction of the Community Resource Center in Lake Worth. Designed to serve the community in many ways, it is the "heart" of the Adopt-A-Family campus. This building has housed Project GROW, the administrative offices, GED and ESOL classes, Volunteer Income Tax Assistance programs, food pantry and clothing closet. With the advent of the Bridges Beacon project, this Resource Center is a point of hope for a community in need.

Everyone at Adopt-A-Family and thousands of people throughout the county are grateful to Terry for all she's accomplished. What a legacy! Perhaps another testament to Terry's vision is her mentoring of that first social worker, Wendy Tippett, hired back in 1990. Wendy has risen through the ranks and today she is Adopt-A-Family's Chief Executive Officer. Wendy is indebted to Terry, and holds in her heart the many lessons she learned from her mentor.

Don and Terry Bozarth



Programs

Bridges Beacon is a community and collaborative effort among Adopt-A-Family, Children's Services Council, Highland Elementary School and the Palm Beach County Health Department. Named to demonstrate its function, the program serves as a bridge, or connector, between service providers and those in the community who need services.

Project UpLift provides short-term assistance to families with children who are at risk of homelessness. Those entering the program are taught problem-solving skills and how to find solutions based on available, identifiable resources.



Family Empowerment is Adopt-A-Family's first program that named the organization. This program links families with "adopters" such as businesses, service clubs, churches and private individuals who support the family emotionally and financially for a period of one year.

Homeless Intervention Program (HIP) provides homeless families residing in emergency shelters and transitional housing facilities with resources necessary to move into permanent housing. Eligible families must be housing ready and able to maintain self-sufficiency.



Service Enriched Housing provides housing to low-income, working-poor families who wish to move into home ownership. The program provides credit repair, first time homebuyers' classes and support services. The minimum monthly charge for a two-bedroom apartment is \$400. Rent is calculated based at 30% of the family's gross income, and any additional amount paid above \$400 is placed in escrow to be used for credit repair or home ownership.

Community Land Trust (CLT) acquires and holds land for the benefit of low-income, working families while providing access to affordable homeownership and rental opportunities. An important element to this program is that case management and other comprehensive support services are provided to participating families, greatly increasing their chances of self-sufficiency.

YOU CAN SEE TOMORROW IN THE





Project GROW is an after-school and out-of-school drop-in center for children aged five to twelve. Available to our client children as well as the community at large, Project GROW teaches physical education and emotional, cultural, and social skills while providing a safe haven to children who have had none. 95% of all children entering Project GROW are at least one full grade level behind their age group, but through our tutoring program, 98% of children exiting Project GROW are at or above grade level.

Project S.A.F.E. (Stable, Able Family Environment) provides permanent, transitional housing and comprehensive support services to homeless families and their children. Support services include budgeting, case management, job training, daycare assistance, support groups, family and individual counseling, and access to Project GROW for their children.



IR EYES.

Additional services offered to the community include a **food pantry, clothing closet, free bus passes,** gifts during the holidays at **Santa Shoppe** and the **Holiday Adopter Program.**



Statement of Financial Position June 30, 2008

ASSETS

Cash and cash equivalents	\$ 384,432
Grants receivable	456,936
Contributions receivable (net)	113,632
Prepaid expenses	19,190
Other assets	6,768
Property and equipment (net)	3,485,589
Community Land Trust	<u>1,143,979</u>
Total assets	<u>\$ 5,610,526</u>

LIABILITIES AND NET ASSETS

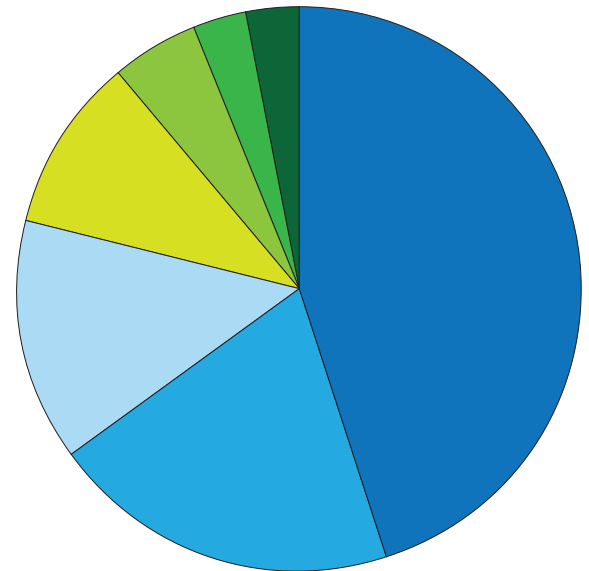
Liabilities

Accounts payable	\$ 5,993
Retainage payable	44,086
Line of credit	300,000
Accrued expenses	52,172
Deferred support	28,823
Resident deposits	57,253
Resident escrow accounts	15,480
Loans payable	<u>617,150</u>
Total liabilities	<u>\$ 1,120,957</u>

Net Assets

Unrestricted	
Equity in fixed assets	\$ 2,868,439
Designated for Land Trust	1,143,324
Designated for contingencies	80,000
Undesignated	<u>231,570</u>
Total unrestricted	4,323,333
Temporarily restricted	<u>166,236</u>
Total net assets	<u>4,489,569</u>
Total liabilities and net assets	<u>\$5,610,526</u>

Revenue Sources



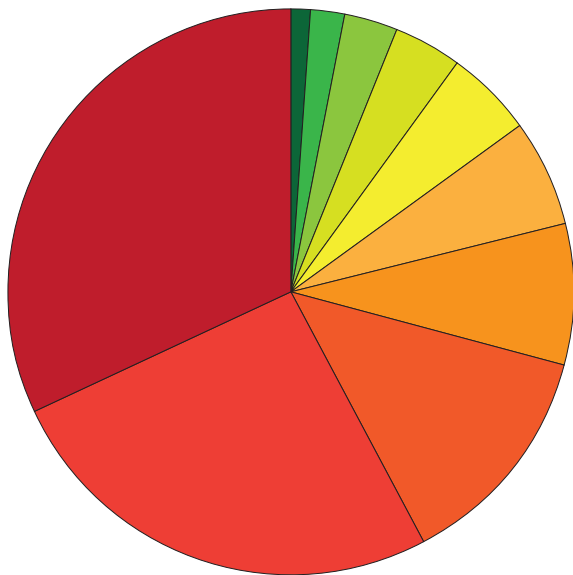
Government Grants	45%
Contributions	20%
United Way Grants	14%
Special Events	10%
Program Fees	5%
Thrift Store	3%
In-kind Donations	3%

Adopt-A-Family is a 501(c)(3) charitable organization founded in 1983 to help families who are homeless or at risk of becoming homeless due to a financial reversal, illness, divorce, death or other extenuating circumstances.



Statement of Activities Year Ended June 30, 2008

Expenditures by Program



 Project UpLift	32%
 Project SAFE	26%
 Project GROW	13%
 Service Enriched Housing	8%
 Homeless Intervention	6%
 Bridges Beacon	5%
 Thrift Store	4%
 Family Empowerment Coalition	3%
 Community Land Trust	2%
 Family Empowerment	1%

In 2008, 91% of families served achieved self-sufficiency.

Support and revenue

Grants and donations	
Government Grants	\$ 1,680,296
United Way Grants	517,918
Contributions	760,818
In-kind donations	126,919
Total grants and donations	3,085,951
Special Events (net)	385,638
Rents	170,397
Thrift sales	105,427
Other income	7,960
Investment income	\$ 5,324
Total support and revenue	3,760,697

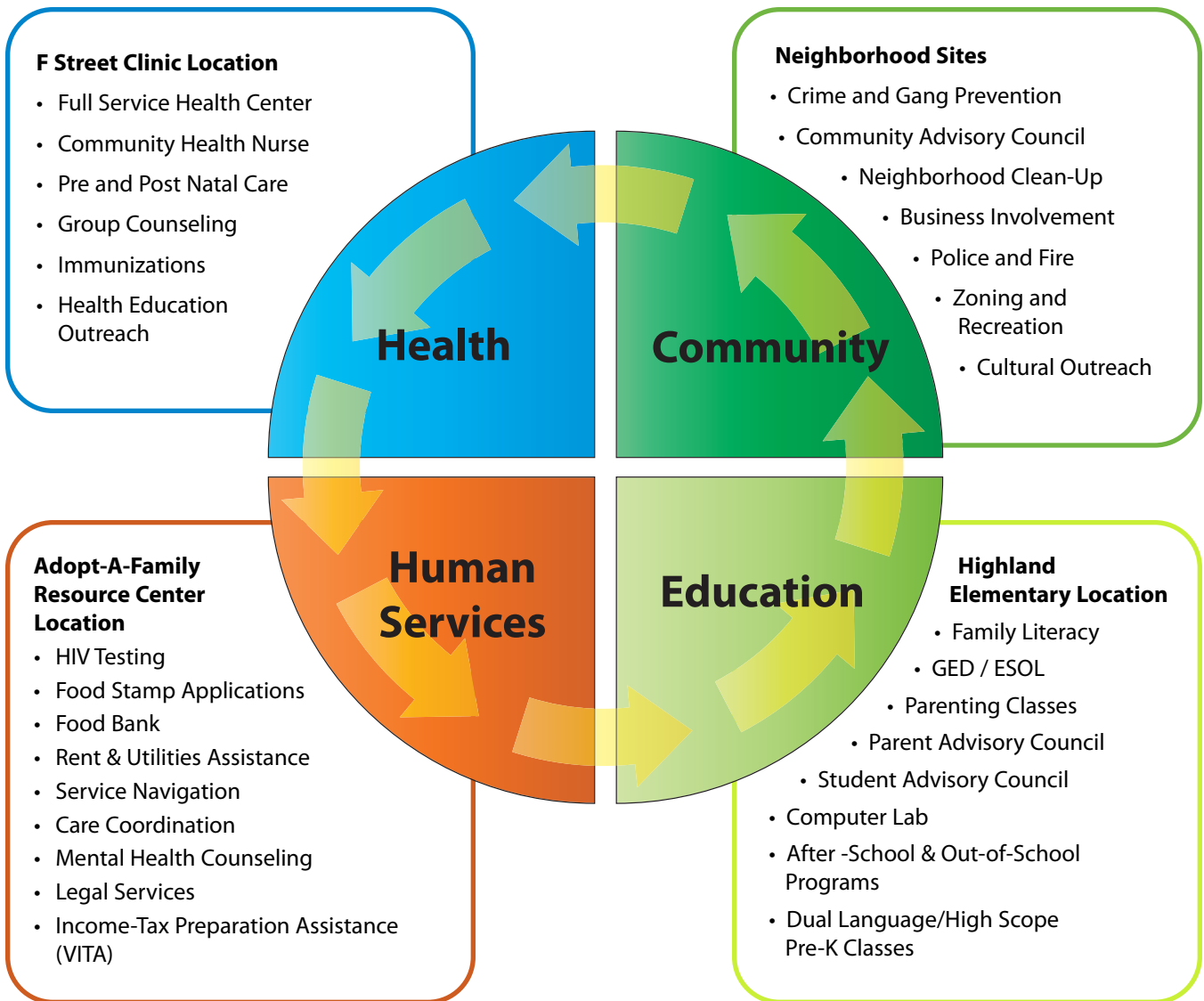
Expenses

Program services	
Project GROW	321,203
Homeless Intervention Program	151,844
Project S.A.F.E.	669,785
Service Enriched Housing	213,811
Project UpLift	830,170
Family Empowerment	11,196
Family Empowerment Coalition	65,317
Bridges Program	138,193
Community Land Trust	64,023
Thrift Store	102,408
Total program services	2,567,950
Supporting services	
General and administrative	282,348
Fundraising	195,214
Total functional expenses	3,045,512
Change in net assets	715,185
Net assets, beginning of year	3,774,384
Net assets, end of year	\$ 4,489,569





Bridges Beacon is a collaborative effort among human service agencies, Children’s Services Council, United Way of Palm Beach County, Palm Beach United Way, and the Palm Beach County School Board and Health Department. As Adopt-a-Family’s newest program, Bridges Beacon coordinates education, healthcare and social service delivery for the ENTIRE family by offering multiple access points. Clients can enter the Bridges Beacon system at any point and utilize as many services as they require. If a client’s needs cannot be met at the point of entry to the system, they are simply referred to the location where the requested service is offered. When accessing services, clients are not assigned second or third case managers. Instead, a single staffer navigates and counsels the client through the entire process, saving precious time.



Community Partnerships



The **Family Empowerment Coalition (FEC)** is comprised of 11 local agencies whose goal is to provide clients a seamless continuum of services which empower clients to navigate existing educational, social and health care systems. Families access the services they need at a much faster rate through the FEC coordinator, who is housed at Adopt-A-Family's Community Resource Center.

The **14th annual Community Back to School Bash**, originally an Adopt-A-Family program, guaranteed that 8,535 children received school supplies and were ready for the new school year. At the Bash, students were paired with volunteer personal shoppers to guide them through a "store" of grade-appropriate supplies. The children – who have limited experience in making the most basic choices for themselves due to their extreme financial situations – were given the opportunity to select supplies in the colors and styles they wanted. In addition to supplies and backpacks, haircuts, clothing, and lunch were available for the entire family to enjoy.



Our **Family Literacy Program** offers both English for Speakers of Other Languages and General Equivalency Diploma classes to our clients and the community. Taught by an instructor with the school board, our program is popular and unusual because it is a day time program that offers its students childcare for below school-aged children and encourages families to read together.

The United Way/IRS **VITA (Volunteer Income Tax Assistance) program** saw 803 filers who had their income taxes prepared for free at the Community Resource Center this year. This was our fifth year as a VITA site, putting \$1.2 million in refunds back in the hands of filers! Imagine how more than a million dollars in refunds has helped needy families in our community!



Adopt-A-Family co-wrote and presented the family component of the **10-Year Plan to End Homelessness**, presented to the Palm Beach County Homeless Advisory Board. The plan, once approved by the Palm Beach County Commissioners, will be an integral component to alleviating homelessness in our county.

The Young Presidents Organization, Lake Worth Community Redevelopment Agency and the City of Lake Worth partnered with Adopt-A-Family to turn a vacant neighborhood lot into **Lend-A-Hand Park**. A day of sweat-equity turned a trash-filled corner into a safe place for children to play as well as a lovely green space for neighborhood enjoyment.

Young Friends present Martinis in the Marsh



Karen & John Marasco



Larry & Kitty Silverstein

Old Marsh Golf Club in Palm Beach Gardens set the stage for the inaugural Young Friends of Adopt-A-Family annual fundraiser *Martini's in the Marsh*. For 140 of Palm Beach County's chic, young professionals, the evening began with a silent auction and martini reception sponsored by Incubands Spirits Group – featuring Alchemy and Mako Vodkas – culminating with a movable feast and dancing till the wee hours to Street Talk Band. Thank you to The Murphy Construction Company, our Entertainment Sponsor. Everyone had loads of fun, raising \$90,000 for Adopt-A-Family.

A round of applause to our sponsors – Harry and Roberta Golub, Florida Power & Light, Regions Bank, Friends of Adopt-A-Family "Auction Room Sponsor", Stuart and Allison Haft, Stephen and Carolyn Haggerty, Joe and Pasena Maroun, Palm Beach Prayer Team Ministries, James Robo and Meredith Trim, and UBS Private Bank "Photography Sponsor".

On the Young Friends Committee were John Castronuovo, Sofia De Ferrari, Beth Hennessy, Kaela Lerner, Karen Marasco, Kelly McFadden, Elena Murphy, Mary Murphy, Beth Ryan, Kitty Silverstein, Shawna Tuscai, Cakki Warren, and André Varona.



Kim & Andre Varona



Perry & Kaela Lerner



Marty, Barbara, Elena, Marty & Mary Murphy



Roberta & Harvey Golub



23rd Annual Tree Lighting Celebration

Chairman Wendy Labbett and her committee raised \$291,000 at the 23rd Annual Tree Lighting Celebration held at The Sailfish Club in Palm Beach.



Edward & Ruth Hennessy



Chairman Wendy & Derek Labbett

The Edward L. Hennessy, Jr. and Ruth S. Hennessy Foundation generously served as Benefactors. Grand Sponsors were Lawrence J. & Florence A. De George, Ed and Linda Edelman, Celia Lipton Farris, Jim and Cindy Larschan, and George and Paula Michel. Sponsors were William and Martha DeBrule. Tree-Lighting Angels included Ron and Cathy Assaf, John and Marianne Castle, Ronald and Marianne Galione, Gene and Penny Heller, Lawrence and Jacqueline Hoff, Margaret Luntz, and Ron and Debbie Parr.

Joining Wendy Labbett on the Tree Lighting Committee were, Linda Argersinger and Kitty Silverstein as Chairmen of the Children's Project, and Alice M. Tarone as the Orchid Chairman.

The rest of this hard-working committee included: Ruth Behrman, Diana Bell, Peg Bonvechio, Trudy B. Brekus, Irene Casey-Ritzenthaler, Marianne Castle, Nancy Chandler, Lori Corrigan, Herme de Wyman Miro, Martha DeBrule, Daria Dolan, Pamela Dupuis, Debbie Dytrych, Cecile Victoria Farris, Julie Gambale, Dona Gibbs, Elena N. Goldfeder, Beth Hennessy, Ruth Hennessy, Vanessa Henry, Carole Hepburn, Tish Hoyt, Nancy Hyman, Carol Jeney, BJ Kemp, Mary Lou Kromer, Paula Michel, Bel Miller, Elaine Nicastro, Constance Nicolo, Carol Nolan, Chris Oberlink, Diane Paladino, Debby Parr, Annette U. Rickel, Cindy Rooney, Alice Scanlon, Adele Siegel, Stephanie C. Smith, Manuela Smyth, Lynn Surovek, Alma Tambone, Barbara Thomas, Carolyn Thompson and Mary Wenk.



Ed & Linda Edelman



Paula & George Michel



Cindy & Jim Larschan

TOM FRANKEL and MARC HAISFIELD served as Chairman and Co-Chairman of Adopt-A-Family's 16th annual Golf Tournament at Bear Lakes Country Club. The tournament brought in more than \$35,000 for homeless and at-risk families with the support of Gunster Yoakley as Award Sponsor, Admiral's Cove Realty as Golf Ball Sponsor, and Polo Trace Golf Club as Putting Contest Sponsor.



Co-Chairman
Marc Haisfield &
Golf Chairman
Tom Frankel



Andrew Simses
lines up a
winning putt.

First Place Winners:
Charles Virginia,
Rick Luciani,
Sam Fromkin &
William Levine



MISSION:

Adopt-A-Family is dedicated to restoring families in crisis to stability and self-sufficiency by providing access to all-encompassing services to families and their children.





**Administrative Offices
Community Resource Center**

1712 Second Avenue North
Lake Worth, FL 33460
Tel: 561.253.1361
Fax: 561.253.1370

Thrift Store & Boutique

7637 South Dixie Highway
West Palm Beach, FL 33405
Tel: 561.540.9343

www.adoptafamilypbc.org

