

# 2.4 mm Connectors and Components

Amphenol  
**SV MICROWAVE**<sup>®</sup>  
RF Connectors & Components

## FEATURES & BENEFITS

**Outer conductors engage and align before the center contacts engage, preventing damage to the center contact**

**Plug coupling nut extends beyond the male center contact, protecting the contact while not mated**

**Fixed bead-contact assembly prevents transmission of mating torques to circuit elements**

**Interface dimensions minimize distortion and deterioration of the mating surfaces**

## APPLICATIONS

**High Speed Digital**

**Test and Instrumentation**

**Military**

**Satcom**



**2.4 mm Connectors  
and Components**

## 2.4 mm Connectors and Components

SV Microwave offers 2.4 mm connectors and components. The 2.4 mm series consists of connectors designed for broadband microwave applications DC to 50 GHz. Designed for a wide range of use in the microwave industry, these connectors are manufactured with a precise tolerance interface to ensure a low VSWR across the entire frequency range.

The 2.4 mm connectors are also used in test and measurement applications where reliability in performance is crucial for repeatable and critical high frequency testing. A full product range is available including cable connectors, board launch connectors, in-series, and between-series adapters.

## Specifications

### Electrical

Impedance	50 Ohms
Frequency Range	DC - 50 GHz
Return Loss	DC - 18 GHz: > 36 dB 18 - 26.5 GHz: > 32 dB 26.5 - 50 GHz: > 26 dB
VSWR	$0.3 \times \sqrt{f}$ (GHz)
Outer Contact Resistance	0.8 Milliohms Max.
Inner Contact Resistance	1.5 Milliohms Max.
Voltage Rating	400 Volts RMS
Dielectric Withstanding Voltage	1200 Volts RMS Max.

### Mechanical

Mating	M7 x 0.75 threaded coupling
Mating Torque	0.9 - 1.1 N-m

### Material

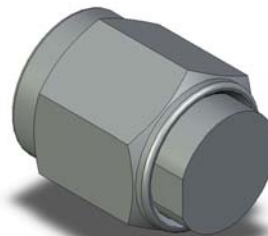
Body and Coupling Nut	Passivated stainless steel
Center Contact	Beryllium copper

### Environmental

Temperature Range	-70°C to +80°C
-------------------	----------------



2.4 mm Attenuator



2.4 mm Termination

